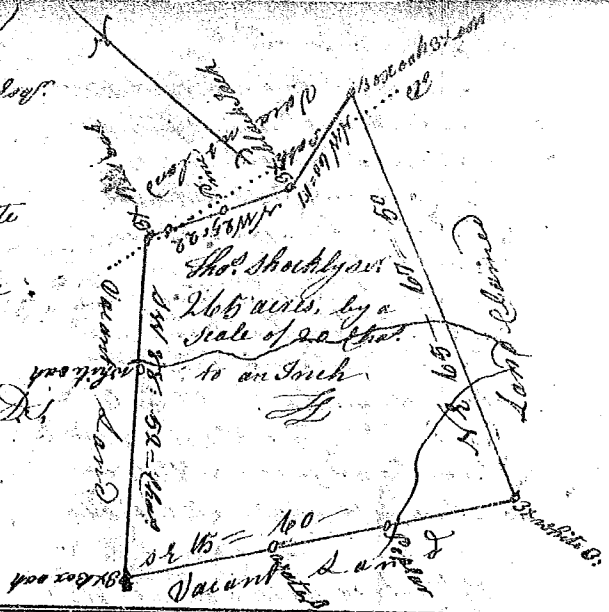


State of South Carolina

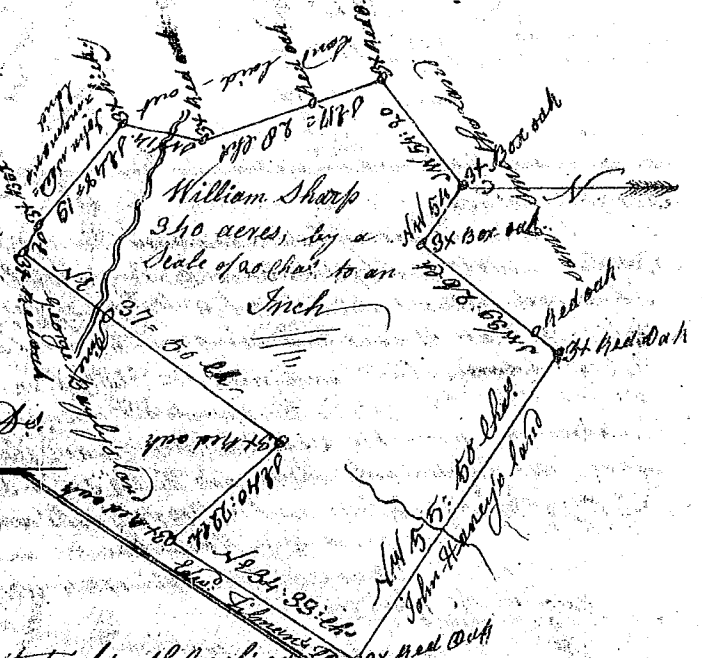
(225)

Pursuant to a warrant from John Thomas Esq. Commissioner of Locations, I have admeasured and laid out unto Thomas Sholly, Esq. a tract of two hundred and sixty five acres of Land situate in Ninety Six District on the waters of Cairns Creek Bounding N & E by on land claimed on all other sides on Vacant Land and hath such shape and Marks as the annexed Plot Represents, Surveyed the 27th day of Sept^r 1784
 Ber: Glenn Det
 Recorded 7th Dec^r 1784



State of South Carolina

Pursuant to a warrant from John Thomas Esq. Commissioner of Locations, I have admeasured and laid out unto William Sharp a tract of three hundred and forty acres of land situate in Ninety Six District on the waters of Peolote River Bounding N & E by on land laid out to John Haney, all other sides on lands laid out and vacant Land and hath such shape and as the annexed Plot Represents, Surveyed the 14th of Oct^r 1784
 David Hopkins Det
 Recorded 7th Dec^r 1784



State of South Carolina

Pursuant to a warrant from John Thomas Esq. Commissioner of Locations I have admeasured and laid out unto Merry Aguiar a tract of three hundred and Nineteen acres of Land situate in Ninety Six District on Broad River, Bounding S & E by on land laid out to Rich^d Hughes SW on Vacant Land SW on land laid out to Esq^r Brown NW on land laid out to Joseph Palmer SE on land laid out to Joseph Forbert, and hath such shape and Marks as the annexed Plot Represents, Surveyed the 11th day of Aug^t 1784
 David Hopkins Det
 Recorded the 7th day Dec^r 1784

